

# ARIZONA TRAILS



FEBRUARY 1990  
VOL. 3 NO. 1

ARIZONA CHAPTER  
OF OCTA

Editor - Rose Ann Tompkins - (602) 963-3565

## JACK'S TRAIL BITS

It is now official: 20 members voted in favor of the new slate of officers. There were no opposition candidates. (Even the Central Committee isn't that unanimous any more.) So congratulations to:

Harland Tompkins	— President
Robert Lee	— Vice President
Wilma Haines	— Secretary
Sheri Lee	— Treasurer

All of these people have shown themselves to be dedicated, capable, knowledgeable OCTA members. In working and "trailing" with them over the past couple of years I have enjoyed their help and support and think of them as good friends. Our Chapter's future is in steady hands.

\*\*\*\*

Elsewhere in this issue you will find my account of our recent field trip to the Lake Powell area. It was an outstanding weekend, made doubly pleasurable by sharing it with the Carters, Lamsons, and Reeds, who travelled so far to be there.

We were especially pleased to have Dr. Baldwin Lamson back in action again after his surgery last fall.

Some of us are idly dreaming of forming a small caravan to tour the Baja sometime. Any takers out there?

\*\*\*\*

It looks as though an unbreakable commitment will preclude us from going on the April field trip. As consolation for this disappointment, Harlie and Rose Ann Tompkins are allowing us to tag along on a planning excursion next weekend (2/16). Weather (and Hualapai Tribe) permitting, we hope to 4WD to the floor of the Grand Canyon. Tell you what happened next time.

Jack D. Root

## PASSING THE TORCH

As the founding president of AZ OCTA, Jack Root has served us well. In the two years of our existence we have moved from a collection of fragmentary ideas to a functioning organization. We have tried various kinds of activities and by experimenting, have determined which kind works and which doesn't work.

Now that we are well established, it would be appropriate to take stock of where we have been and where we want to go. The historian has two forms of "raw data", the written word and physical artifacts. For most people, history consists completely of the written word. I think that it is to the credit of AZ OCTA that most of our organized activities involve field trips with some form of investigating the physical artifacts in the form of ruts, displaced rocks, inscription rocks, etc, or simply in standing in the same location where immigrants passed.

We have established the pattern of having 4 to 5 outings per year along with one symposium. Although these activities serve us well, of equal or greater value are individual trail activities by members of the group. While not formally chapter activities, nevertheless they are often stimulated by the chapters very existence. If the chapter nudges us to get into libraries, talking to local authorities, and looking for ruts, it is a positive influence.

As the incoming president, I would like to mention my view of what a president does. One of the strengths of this organization is that its members have enormous talents in some field or other to bring to the organization. We are not a group of idle listeners. The job of the president then is much like that of the mule driver. He herds the group along, sometimes subtly suggesting when it time to move as a unit, but the other participants of the operation do most of the work.

Again, a thanks to Jack Root for getting the organization started and herding us through the early stages. Our current list of officers consist of president, vice-president, secretary, and treasurer. I would propose to add one more office, that of "current past president". The main duty of this office is to give sage advice.

Harland G. Tompkins

**CALL FOR PAPERS**



*Arizona Chapter of the  
Oregon California Trails Association  
will hold its*

**SECOND  
ANNUAL**

**TRAILS SYMPOSIUM**

**SATURDAY,  
JUNE 16, 1990.**

The primary location being considered at the moment is a museum in Casa Grande.

We invite any member of ARIZONA OCTA to present a paper on a  
**trail/historical subject.**

We expect to solicit talks from one or two individuals outside the chapter as well.

In the past, talks have ranged from 20 to 40 minutes.

Visual aids are encouraged and appropriate equipment will be available.

You are asked to submit your tentative title to Harland Tompkins by April 15.

We expect to publish a proceedings.

If your talk lends itself to publication, we would like to include it.

Please make the manuscript available to us at the time of the symposium.

**SAVE THE DATE!**

Chapter members will  
receive details in May.

HARLAND TOMPKINS  
1125 W. MISSION DR.  
CHANDLER, AZ 85224  
(602) 963-3565

# BEALE ROAD FIELD TRIP - APRIL 7 & 8, 1990

The Arizona Chapter will offer its first outing on the Beale Road this spring. It will cover only a few miles of what we hope is the beginning of several trips to see various parts of the road in Arizona and New Mexico. This trip will concentrate on the Kingman to Sitgreave's Pass area in western Arizona.

Edward Beale and his men made four trips through the area, locating and improving springs, and putting in cuts and embankments to complete the first Federally funded wagon road to California. His trips date from 1857 to 1859 and have been largely remembered for the experimental use of camels as pack animals.

This section of the road closely follows, in places, what later became Route 66. The Mohave County Historical Society and Museum have done much to locate remnants of the Beale Road. Two members of this group, Loren Wilson and Ed Edwards will be our guides on the two days we will be in the area.

The weekend will start on Saturday morning at 11:30 am at the park located across the street from the museum and the Chamber of Commerce. The park contains a memorial to Beale and we will use that area as the meeting place. At that time we will have a packet of information for you and encourage you to bring your own picnic lunch or fast food delicacy for a time of visiting and looking over the information.

The museum will be opened early for us, probably about 12:30 pm and Loren Wilson will be there to introduce the museum and the afternoon's activities. About 1 pm we will leave to tour the Kingman area sites. This will include Beale Springs (which was later a military post), Boy's Pass, and remnants of the road through the town. We may try to car pool to cut down on the "parade effect".

Dinner will be at 5 pm at the Steak Barn, located at 2645 Airway. Dinners here are priced from \$6.95 to \$14.95 for steaks, with chicken and fish also available. At 7 pm we will meet back at the museum for our business meeting and then a slide program by Loren Wilson. We will try to end the evening relatively early since Sunday will start early.

On Sunday morning we will again (breakfast eaten) meet at the museum parking lot at 8 am. If possible we will again car pool. One segment on Sunday is only accessible by 4WD, but we can "ferry" people in that area if necessary as it is relatively close to the highway. It will be a long morning so you may want to bring along snacks. We will have water available. There are NO services between Kingman and Oatman.

From Kingman we will go to the Sitgreave's Pass area to meet with Ed Edwards. The canyon leading to the pass has a number of sites accessible by car and on foot. We will have a chance to view and walk on the road and Ed will give us information on how the canyon has been used by various groups through the years. On the west side of the pass sits the ruins of Goldroad and then the town of Oatman; the latter being a former gold town and now a tourist stop with several restaurants and gift shops.

We plan to finish the planned activities about midday. This will give those heading home time to travel. For those having more time to spend in the area, there are a number of historical places of interest from Fort Mojave to Peach Springs, as well as the casinos just across the Colorado River.

The weather at this time will probably be warm (to quite warm) in the daytime to cool in the evenings. There are MANY motels in Kingman as well as a variety of RV parks and campgrounds. We would suggest that you take exit 53 off of I-40 as there is quite a concentration of motels in both directions from the exit. The KOA is also located off this exit, as well as the Steak Barn. This is not considered a busy time of year, accommodations will not be hard to find. We understand that completely self contained RVs may park overnight in the Chamber of Commerce parking lot, which is located next to the Museum. Motel prices range from about \$30 on up, with many having senior citizen and/or AAA discounts.

There will be the usual \$2 per person trip fee, payable that weekend. Use of the museum as a meeting place will be at no charge; the usual fee was waived for us.

**In order to plan for handout material and the Saturday evening meal, we are asking that you return the enclosed sheet if you are planning to attend.**

If you have questions, contact Harland or Rose Ann Tompkins, 1125 W. Mission Dr., Chandler, AZ 85224, phone (602) 963-3565. We plan to be in Kingman on Friday night, staying in the cabin at the KOA. If you are in the area on Friday night, come by, or join us for coffee on Saturday morning before 11.

HOPE TO SEE YOU IN APRIL!

.....

The following are a few of the many accommodations in the exit 53 area. We do not recommend any of these, we are just giving you a listing of possibilities.

KOA - 3820 N. Roosevelt  
757-4397.  
Silver Queen - 3285 E. Andy Devine  
757-4315  
Best Western King's - 2930 E. Andy Devine  
753-6101  
Holiday Inn - 3100 E. Andy Devine  
753-6262  
Days Inn - 3023 E. Andy Devine  
753-7500  
Super 8 - 3401 E. Andy Devine Ave.  
757-4808  
Econo Lodge - 3381 E. Andy Devine  
757-7337  
Sunny 8 - 3275 E. Andy Devine  
757-1188

## BOOK SALE AT KINGMAN!

We will again have a book sale as a chapter fund raiser. Look over your library for duplicates or ones you no longer need or want. They can be trail related or anything you feel might be of interest to this group. Put a price on them and bring them to the picnic lunch on Sat. and the business meeting that night.

If each attendee will bring even two or three books, we can help the chapter treasury.

## WINTER MEETING AT LAKE POWELL

Eight Arizona Chapter members (plus 2 guests) braved northern Arizona's wintry potential the weekend of January 27/28 to attend the "Hole-in-the-Rock" commemoration. They were rewarded with sparkling skies and dry roads and an experience none will forget. The group comprised Californians (Lamsons and Reeds), New Mexicans (Carters), South Carolinians (guests) and well as two from the Old Pueblo (guess who?).

HIRC is an annual remembrance of the 1879-80 trek of 250 Mormon pioneers who left Escalante (Utah) and crossed the Colorado at this point on their way to found the little community of Bluff (Utah). What began as a six-weeks journey ended some six months later. Incredibly, all survived, along with three babies born enroute. The precipitous chasm by which the wagon train descended 1000 ft. to the River is still highly visible. Some of us climbed it. Since several hundred feet of the cleft is now below the surface of Lake Powell, our descent was much shorter

than that made by the pioneers — with wagons!

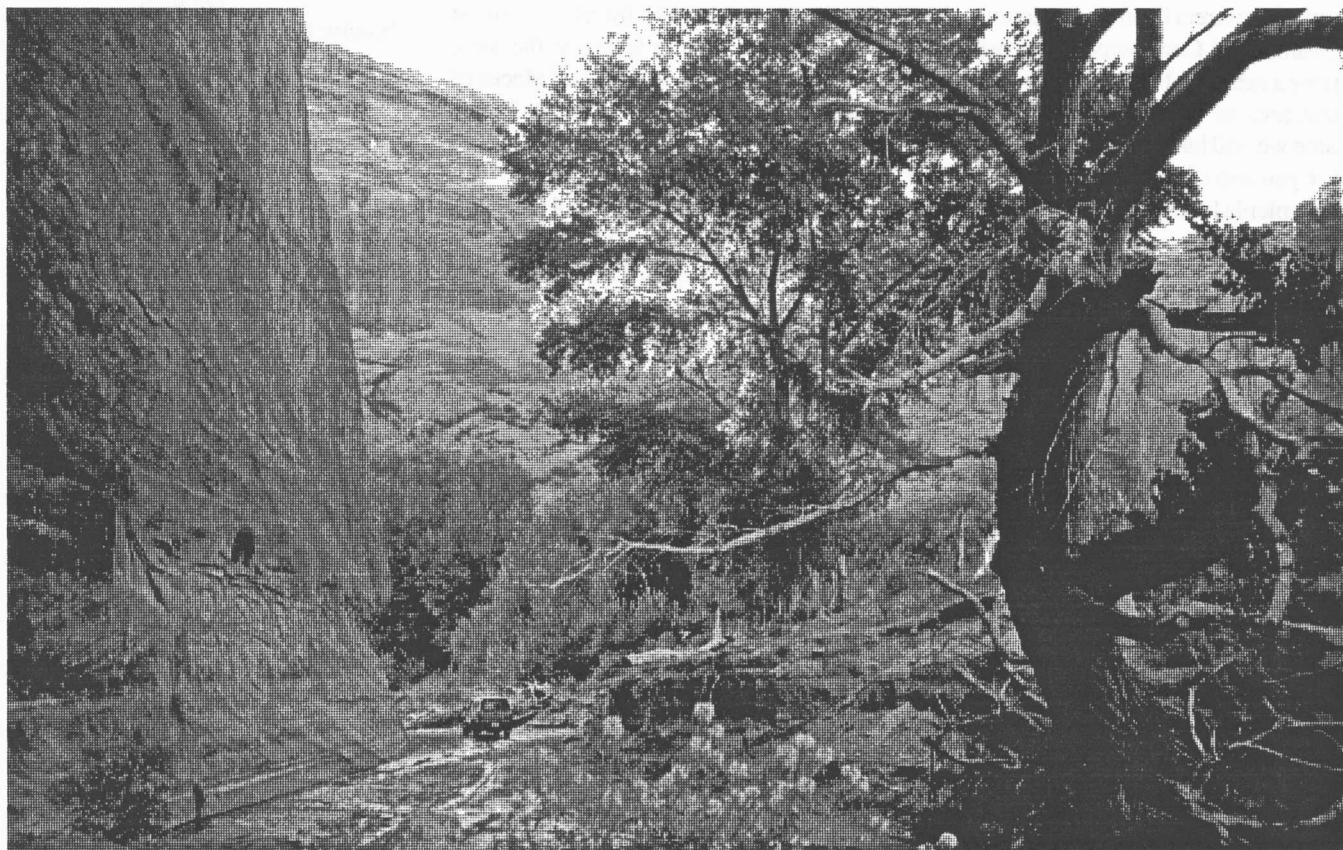
It was mind-boggling to all our latter-day trail buffs. On the long return journey to Wahweap Marina, our boats slipped up one of Powell's innumerable side canyons. After a short hike we were rewarded with a close-up view of another natural wonder — Rainbow Bridge, the largest natural arch on earth. The "oohs" and "ahs" when this spectacle came into view spoke volumes; we temporary intruders were confronting Eternity.

Jack Root

### PLEASE NOTE:

*You will receive another newsletter in late April or early May. It will contain a chapter membership roster. At present, March 1, we have 28 paid units, with 46 members. Almost everyone has renewed their membership and we continue to gain new members.*

- SEND IN REGISTRATION FORM FOR KINGMAN TRIP BY MARCH 25  
- CHECK MY LIBRARY FOR EXTRAS RE: THE BOOK SALE IN KINGMAN.



*Taken in Canyon de Chelly during the trip in September. The canyon walls dwarf one of our vehicles during this mind expanding event.*

**REGISTRATION FORM FOR BEALE ROAD OUTING  
SATURDAY & SUNDAY, APRIL 7 & 8, 1990  
KINGMAN, ARIZONA**

I/We plan to attend the AZ OCTA meeting in April

NAME \_\_\_\_\_

ADDRESS \_\_\_\_\_

PHONE \_\_\_\_\_

NUMBER ATTENDING IN PARTY \_\_\_\_\_

I will be driving a 4WD vehicle. YES \_\_\_\_\_ NO \_\_\_\_\_

I/We plan to attend the Saturday evening dinner at the Steak Barn. Please  
make reservations for \_\_\_\_\_ people.

**Return by March 25 to:**

Rose Ann Tompkins  
1125 W. Mission Dr.  
Chandler, AZ 85224

