



Arizona Trails

October 1989
Vol. 2 No. 4

ARIZONA CHAPTER
OCTA

Editor
Rose Ann Tompkins

JACK'S TRAIL BITS

Boise was sheer fun for all of us. The Idaho people had worked very hard to make it so, and they succeeded. They even had a superb back-up plan to serve the baked Idaho trout dinner at an indoor location when the skies opened up that afternoon at the Stricker's Store historic site. And who could ever forget the thrill of touring the City of Rocks with noted trail author Tom Hunt explaining the finer points? Those who were lucky enough to witness the wild horse stampede on our trail hike toward Teapot Dome will be telling of it for years to come. All of us are proud of the fact that our chapter had a higher proportion of it's membership attend the Convention than any, excepting of course, the local chapter.

As I write we are reflectively recuperating from an OCTA "Rendezvous" over the notorious Hastings Cutoff, the trail followed by the ill-starred Donner-Reed party and others, from Ft. Bridger, Wyoming to its juncture with the main California Trail west of Elko, Nevada. It amazes me that our leaders/planners were able to ferret out and authenticate most of the trail as followed in 1846. As a result, our fourteen 4WD rigs spent six dusty days on the actual traces over several obscure passes and observed the various springs that meant life itself to the pioneers. Discretion told us to skirt the forbidding and ominous salt flats enroute to the lush springs that still flow at the base of Pilot Peak. That the emigrants were unable to do so led to many accounts of human and animal agony and death, abandonment of wagons and possessions, and disaster, almost within sight of the springs and salvation.

I want to publicly thank Doyle and Fiona Reed, Baldwin and Ormy Lamson, and Mary Mueller and Pat Loomis, Arizona members all, for planning and leading this memorable experience.

Hope to see you all at Las Cruces Nov. 4th, Jim and Marion Carter have planned a good time.

Jack D. Root

+++++

ADDTIONS TO THE ROSTER:

NEW MEMBERS: Ray & Terry Thiessen
721 Golf Course Road
Thacher, AZ 85552

John & Erin Townley
7115 Pembroke Drive
Reno, NV 89502
(702) 359-2178

We now have 28 membership units in our chapter. We continue to grow!

A reminder - dues for 1990 (\$5) will be due on Dec. 1, payable to Sheri Lee.

NEW MEXICO TRAIL TRIP NOVEMBER 4 & 5

JIM & MARION CARTER HAVE PLANNED THE CHAPTER'S FALL OUTING FOR THE WEEKEND OF NOV. 4-5, AND IT LOOKS TO BE AN INTERESTING AND FULL TIME. LAS CRUCES, NM IS THE MEETING PLACE. JIM HAS SENT THE FOLLOWING INFORMATION, PLEASE READ IT CAREFULLY, HE NEEDS TO HEAR FROM THOSE PLANNING TO ATTEND BY OCTOBER 20.

Since Las Cruces is 270 miles from Tucson and 390 from Phoenix, most persons may prefer driving cars instead of campers. On this premise, I will rent a 12-15 passenger van for transportaion to and from the sites listed in the schedule, and pick up from and deliver to the motels or campgrounds. The van will allow for an earlier start and will save wear and tear on campers. The local campgrounds fill up in November with "snowbirds", so camper reservations should be made very soon.

Jerry McDonald is a Paleontologist at the Paleozoic Trackways, which are 280 million years old. He now charges \$5 per person to view and hear his lecture on the Paleozoic Trackways. If there is not enough interest at that price, we will omit it.

Mike Maloof, BLM archeologist, will accompany us to the Butterfield stations and to Fort Cummings.

Lunch on Saturday will be sub sandwiches and soft drinks at \$4 per person; or you may provide your own.

Dinner at La Posta, the Butterfield stop in old Mesilla, on Saturday evening will be Dutch Treat from the Mexican/American menu.

I ask that those making this trip to please let me know by Oct. 20 if they want to see the Paleozoic Trackways (\$5 each), and if they want the lunch of sub sandwich and soft drink (\$4 each). If there are dietary limitations, please specify individual requirements.

JIM CARTER - 4091 SOTOL DR. - LAS CRUCES, NM TELE - (505) 522-1189

- - - - -

WEEKEND SCHEDULE

Saturday - Nov. 4

- 9:00 am - Depart Las Cruces by van.
- 9:30 am - Arrive Southern MN Fairgrounds to view Paleozoic Trackways.
- 10:30 am - Stop at Rough & Ready Butterfield Way station. Hunt for Whipple markers of US/MX border (before Gadsden Purchase). Drive on the trail to Mason's Ranch, a sometimes used stop.
- 12:30 pm - Cooke's Spring. Lunch.
- 1:00 pm - Stop at Fort Cummings and Butterfield station.
- 2:45 pm - Stop at Goodstight way station.
- 3:15 pm - Begin return trip to Las Cruces.
- 6:30 pm - Dinner at La Posta, the Butterfield stop in Mesilla.
- 8:00 pm - Business meeting and social hour at Carter home, 4091 Sotol Dr.
- 10:00 pm - Return to motels/campgrounds by van.

Sunday - Nov. 5

- 9:00 am - Depart Las Cruces. Drive by former site of Picacho way station
- 9:45 am - Stop at Fort Selden, a state monument. Once commanded by Arthur McArthur, whose son, Douglas McArthur, was 4 at the time.
- 10:00 am - Depart to return to Las Cruces and end of weekend.

ACCOMODATIONS IN THE LAS CRUCES AREA:

(New Mexico Area Code is 505)

Motels & Hotel

NOTE: Please inform Jim where you are staying so he will know where to pick you up on Sat. morning.

I-10 Exit 140, Mesilla:

- Best Western Mesilla Valley Inn, 901 Avenida de Mesilla, 524-8603
\$43 Double, with Senior Discount
- The Hampton Inn, 755 Avenida de Mesilla, 526-8311, \$38 Double
- Quality Inn Mesilla Real, 790 Avenida de Mesilla, 524-0331, \$35 Double

I-10 Exit 142, Main Street/ University Avenue:

- Holiday Inn, 201 E. University Ave., 526-4411, \$55 Double w/Sr. Disc.
- Howard Johnsons, 2600 S. Valley Dr., 526-4441, \$36 Double
(across from Holiday Inn)
- Motel 6, 235 La Posada, 525-1010, \$30 Double (North of Holiday Inn)
- Super 8, 245 La Posada, 523-8695, \$30 Double (North of Holiday Inn)
- Best Western Mission Inn, 1765 Main Street, 524-8591, \$36 Double
(North of Holiday Inn one half mile)

Exit I-10 onto I-25 North (Albuquerque) - then Exit I-25 at Lohman Ave.,
turn right to Telshor Avenue, then right to:

- Hilton Inn, 705 S. Telshor Ave., 522-4300, \$55 Double w/Sr. Disc.

Campgrounds

I-10 Exit 135, US 70:

- KOA Campground, 814 Weinrich Road, 526-9030, \$10 with Senior Discount
(on right, about one half mile from I-10 exit)

I-10 Exit 140, Mesilla:

- Siesta RV Camp, 1551 Avenida de Mesilla, 523-6816, \$9 Double

BELOW ARE SOME OF THE AZ OCTA MEMBERS ON ONE OF THE TOURS AT THE CONVENTION -

Left to right: Baldwin Lamsom, Ormy Lamsom, Jack Root, Warren Wesler, Fred Rozum, Joyce Rozum, Rose Ann Tompkins, & Harland Tompkins.



CANYON DE CHELLY 4WD TRIP HELD IN SEPT.

Labor Day Weekend was the chapter's first outing of the season, and the first ever done with all 4WD vehicles. Gary and Dean Keller set things up and it was a great weekend. Although not a trail outing in the usual sense of historic trails, it was full of history, scenery, and fun.

Those who made the trip besides the Kellers included Bob & Sheri Lee, Harland & Rose Ann Tompkins, Susan Doyle, and guest Richard Krause. Gary also arranged for our two Indian guides, Daniel and Marilyn Staley.

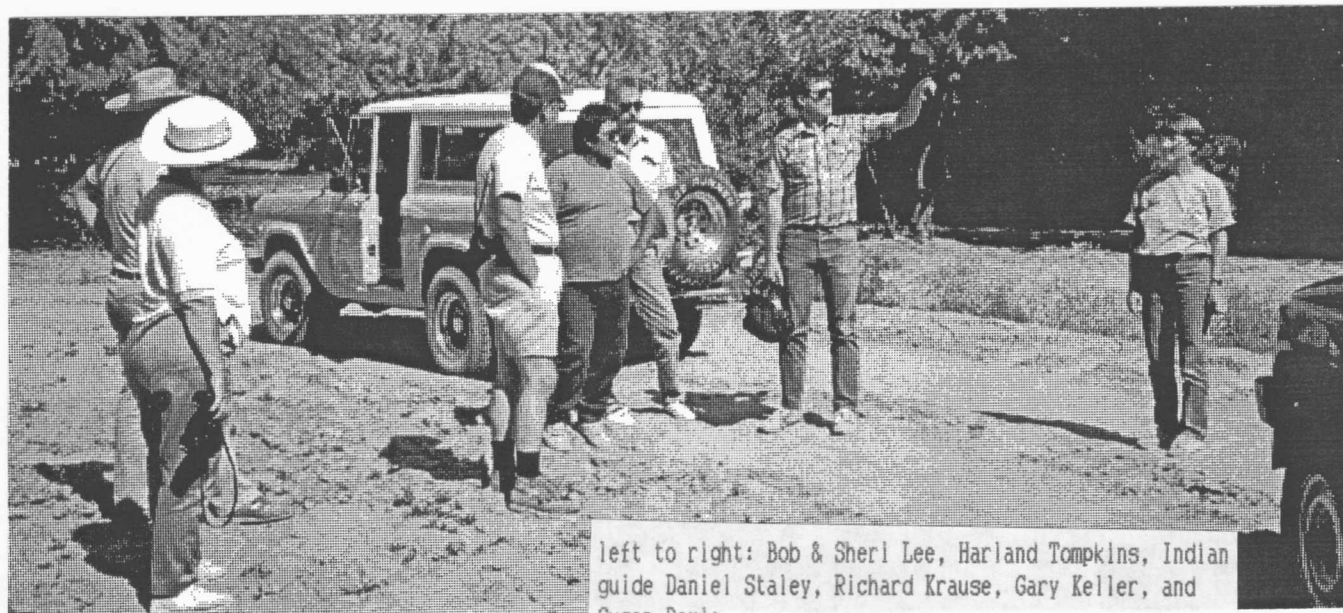
We met early on Saturday afternoon, after checking into the campground and having a quick lunch. Daniel was our guide that afternoon on our trip into Canyon de Muerto. The first order of business was to let about half the air out of our tires so we would be less likely to get stuck in the sand. The trail into the canyon is along the wide sandy stream bed that comes out of the canyon system, dry at this time of the year.

The six hour trip on Saturday was spent viewing some of the art work on the canyon walls, and looking at several ruins, all the way to Mummy Cave. A special treat was a stop at Daniel's relatives where we met his aunt and saw the rug she is working on. The day included numerous "photo opportunities" to say the least.

Sunday was an eight hour trip led by Marilyn into Canyon de Chelly itself. There were several highlights that day, including White House Ruin, Spider Rock, a hike up to The Window, and a visit to the hogan of Daniel's grandfather. One had the feeling of being in a place that had characteristics of both an ancient people long gone as well as a contemporary group living and using every part of the canyon. There were horses grazing here and there, sheep and goat herds with their herd dogs to watch over them, small fields of corn and beans, shelters of various kinds, and those who live there in quiet dignity. Again there was much to photograph.

On Monday, several took time to drive the roads that follow the rim of the canyon, enjoying the views from the lookouts. We looked down on places we had visited on the floor, a very different perspective.

It was certainly a unique opportunity to see a part of Arizona that is off the beaten path, and to see it in a way most who go there don't see it. Our thanks to Gary and Dean for taking us on this visit to a quiet corner of beauty and history. And our thanks to Daniel and Marilyn Staley for sharing their history and culture with us.



left to right: Bob & Sheri Lee, Harland Tompkins, Indian guide Daniel Staley, Richard Krause, Gary Keller, and Susan Doyle.

BUSINESS MEETING MINUTES FROM AUG. 10

Arizona Chapter of OCTA met at 7:00 am, Aug. 10, 1989, in the Coffee Shop at the Red Lion Inn, Boise, Idaho. Ruth Root called the meeting to order at 7:10 while we enjoyed breakfast. Present were: Ruth Root, Harland & Rose Ann Tompkins, Mary Mueller, Fiona & Doyle Reed, Bob & Betty Lee, Warren & Margaret Wesler, Ormy Lansom, Pat Loomis, Susan Badger Doyle, Jim & Pat Trickey, and Wilma & Aubrey Haines.

Ruth explained that Jack was attending a Committee meeting. She opened discussion on what we can do for the national organization. Several had attended the various workshops the day before and can use the knowledge both locally and nationally. We should publicize our meetings in local and state newspapers and send clippings to News From the Plains. We should watch for diaries and check to see if they have been indexed in Mattes' book and are on the COED list.

Mary Mueller wants us to be a clearing house to keep them in touch with volunteers. Contact person Bob Lee is to get this information in the card file data base. Shawna Root and Tom Hunt are working on this file. Chuck Dodd needs help on News From the Plains.

Rose Ann Tompkins wants information on Beale's Road, especially any diaries from those who used the road.

Barbara Magerl is publicity chairman for the national organization. Keep track of items in the papers covering activities. Ormy Lansom requested we type clearly, double space, with a good, new typewriter ribbon.

Resource person on how to set up a Symposium, furnish guidelines, etc. Dr. Harland Tompkins, who managed ours in June.

The tentative program, as outlined by our July meeting at Lee's cabin, was approved by the group.

Meeting adjourned at 8:00 am.

Wilma Haines, Secretary

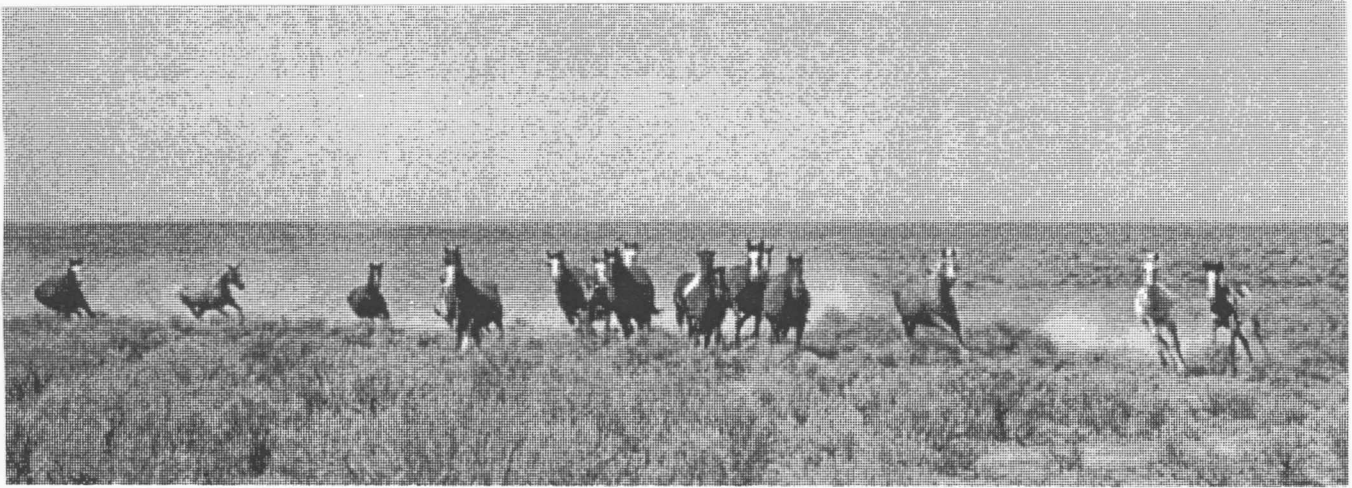
SYMPOSIUM PROCEEDINGS AVAILABLE

By now many of you have a copy of the proceedings from our Trails Symposium held in Tucson in June. They were ready in time to take copies to Boise where they were made available to the convention attendees at \$2 per copy.

Since the chapter subsidized the cost of the proceedings, each member unit is due a copy without cost. They will be available at our future meetings for you to pick up if you do not yet have a copy. If you want your copy mailed to you, the cost for postage will be \$1.50. Also if you want more than one copy, they are an additional \$2 each.

The proceedings were well received by those in Boise who saw them. The idea of a chapter sponsoring a symposium seemed quite unique, perhaps others will take our idea and use it.

EDITOR'S NOTE: I have agreed to become the editor for NEWS FROM THE PLAINS beginning with the December '89 issue. As a result I will have available more sophisticated computer equipment and software than I have been using. I will try to continue this newsletter as before and perhaps even use my new editing skills here.



This herd of horses was an exciting surprise while hiking the Oregon Trail during the OCTA convention.

SCHEDULE FOR 1989-90

ARIZONA OCTA

Date	DESCRIPTION	CONTACT PERSON
Nov. 4,5	Trail sites in southern parts of New Mexico. Includes Ft. Cummins, Cook Spring, Ft. Fillmore, and Butterfield Stage Stations.	Jim Carter (505) 522-1189
Jan. 27	Boat trip on Lake Powell from Wahweep to Hole-in-the-Rock, Morman site.	Jack Root (602) 749-9679
Apr. 7,8	Beale Road traces in the Kingman, AZ area. Includes Sitgraves Pass, Beale Springs, and Mojave Historical Museum.	Rose Ann Tompkins (602) 963-3565
June 16	2nd Annual Trails Symposium Tucson	Harland Tompkins (602) 963-3565
July 14,15	Annual planning meeting Lee's cabin, Mt. Lemmon	