

DESERT TRACKS



SOUTHWEST CHAPTER OCTA

August, 1998-3

ANALYSIS OF ROCK SAMPLE FROM OATMAN MASSACRE SITE

Last March, during the trail outing for the OCTA Board of Directors, examples of rust on rocks were found. There was some skepticism as to whether the rust was natural or not. Chapter member Bob Stuart took a small sample for analysis. The following is his report.

"The rocks in the Maricopa Mountains are Precambrian granite and metamorphic rocks. This rock is a gneiss; probably from a rhyolite. Note the banded nature. The dark partings, or thin bands, are micaceous. There is no magnetite, iron oxides or sulfides in the rock.

The oxidized material (rust) is only on the outside surface. It flakes off rather easily, and is attracted by a magnet. Therefore, I think the large oxidized spots are from some iron rubbing on the rock. The rock is siliceous and harder than iron, so iron should rub off on it.

This is certainly the case at the Oatman massacre site. I have never seen chunks of iron oxidizing from basalts. These are real good examples of iron material rubbing onto the rocks."

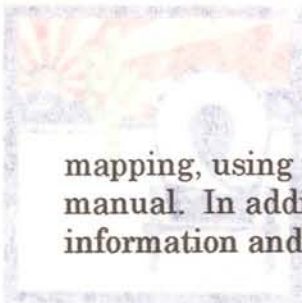
It is good to have Bob Stuart's expertise assist the Chapter in these inquiries.

SOUTHERN TRAIL MAPPING COMMITTEE REPORT - July, 98

Two week-long mapping trips were held since last July.

Trip 1 - October 31 to November 6, 1997 - New Mexico

This was an intensive week of mapping in New Mexico, from Hunter's Draw on the Rio Grande to an area between Round Mountain and Ft. Cummings. Although we had been to this area before, we had new information to use and felt, after a week of mapping, that we have now completed this portion of the trail. In fact, most of the trail has now been mapped between the river and Soldier's Farewell. Don Buck completed the relevant topographic maps from this week of



mapping, using the methods as outlined in the Mapping Emigrant Trails (MET) manual. In addition, an extensive report was produced, using additional information and photographs.

Trip 2 - April 9 to 14, 1998 - New Mexico and Arizona

Mapping was begun in an area that has been visited before on past trail outings. We returned to the area from Whitmire Pass in extreme southwest New Mexico to Guadalupe Canyon in extreme southeast Arizona. No actual mapping was done in Arizona, though the access to the canyon is in Arizona. This would be classified more as a surface look of the area, with little actual mapping done. There are a number of problems to deal with in the area including very rugged terrain, cultivated areas, historical flooding in the Animas Valley, and a private landowner that would not give us permission to enter their land. We plan to return to this area in the future. More research is needed. This is a very sensitive area with mostly privately owned land, rather than mainly public land that we encountered in other areas.

Summary

The project is continuing with a small but dedicated group of mappers. This past year the group included Don Buck, Tracy DeVault, Marie Greene, Richard Greene, Dave Hollecker, Neal Johns, Rose Ann Tompkins and Cam Wade. It is difficult and exhausting work, though it has its rewards. The use of multiple GPS (Global Positioning System) units and the new FRS (Family Radio Service) units have aided the work. It should be said that all these units have been purchased by those participating; the chapter has not financed this part of the project. One new mapper, Cam Wade, is also working on his own in the Rio Grande Valley- the area between Socorro (where he lives) and Hunter Draw.

I would like to personally thank those who have been involved in the mapping. It is a large investment of personal time and money. In addition, Reba Grandrud, my co-chair, made the contact with the private landowner that allowed us to go into Guadalupe Canyon.

The preceding was the report as given at the recent SWOCTA planning meeting in Prescott, Arizona. As an addition for the newsletter, I would like to update the membership on the mapping project as it has developed. The project got its start in October, 1993 when Don Buck led a mapping seminar in Flagstaff, AZ to a group of chapter members. This included classroom and field work and learning to map trail according to OCTA's MET manual.

The chapter attempted to combine mapping and weekend chapter outings with trips in November, 1994 and February, 1995. Realizing that weekends did not get us much return for the travel time and distance involved, a decision was made to

separate mapping from outings and lengthen the mapping into week-long trips. Unfortunately, fewer members are able to commit to week-long trips.

The plan was to have two week-long trips per year. Beginning in October, 1995, the chapter has now completed seven weeks of mapping, equaling 37 person-weeks of field work. Those who go mapping come in self-contained, 4WD, travel units; we usually camp along the trail. Many additional hours are spent researching trail diaries and old maps, plus traveling to and from our homes.

The project has been a learning experience. We have become more adept at finding trail signs, forming good working relationships with private landowners and government agencies, and learning what works best for living and working in rugged areas. We have incorporated some of the newer technologies to make mapping technically easier, but in order to properly do the job as outlined by OCTA's MET manual, each mile is actually walked at least once (Don Buck says we walk ten miles for every mile mapped).

Lest you think we must be about finished with this project, it has hardly begun. Don has estimated there are about 6,000 miles of trail in Texas, Oklahoma, New Mexico, Arizona, Utah, Colorado and California that comprise the Southern Trails complex. We have only worked on trails in Arizona and New Mexico so far, and have not finished those. There are many years of work ahead of us.

The core group of mappers is small, but if you think mapping is something you would like to do, we invite you to join us. You can learn on the job. You can stay for as long as you want - it is ok to leave before the week is over. After learning the process, one can also work alone on their favorite piece of trail. We can supply the necessary maps and diaries to help you. If you have research skills or know of map archives we may not have utilized, we can use your help.

THE NEXT MAPPING WEEK IS SCHEDULED FOR OCTOBER 15 THROUGH OCTOBER 21, 1998 WHEN WE WILL RETURN TO THE APACHE PASS/FT. BOWIE, ARIZONA AREA. IF YOU ARE INTERESTED IN PARTICIPATING IN THE MAPPING WEEK,

CONTACT ROSE ANN AT:

**Rose Ann Tompkins
1125 W. Mission Dr.
Chandler, AZ 85224**

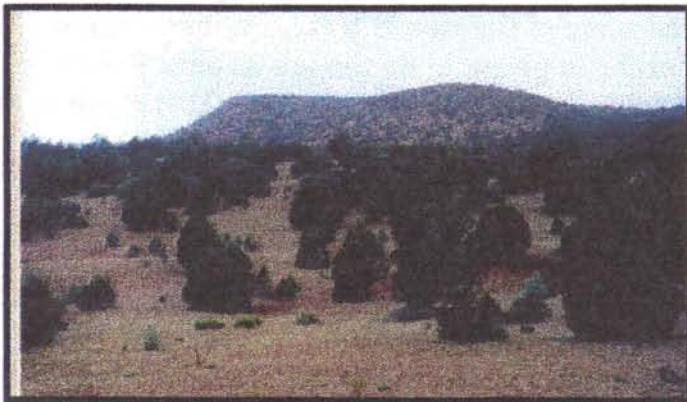
**602 963-3565
tompkin@primenet.com**

SWOCTA PHOTO ALBUM

July 18, 19, 1998 Planning Meeting & Hardy Toll Road



Planning Meeting on Tracy and Judy DeVault's back deck. L to R Rose Ann Tompkins, Harland Tompkins, Richard Greene, Tracy DeVault, Peter Bennett, Joyce Rozum and Fred Rozum.



Top photo is trace of the Hardy Toll Road. Bottom photo looking at the Road, L to R Joyce Rozum, Judy DeVault, Peter Bennett, Tracy DeVault, Richard Greene, DanMessersmith, (hidden behind Dan is Fred Rozum and Rose Ann Tompkins) Harland Tompkins (hidden behind Harland is Marilyn Martin) and Bob Martin.



The Fence to Simmons. Going under L to R, Fred Rozum, Dan Messersmith, and Tracy DeVault.

SWOCTA OUTING - SUNDAY, JULY 19 - HARDY TOLL ROAD, WILLIAMSON VALLEY, SIMMONS & CAMP HUALAPAI

Our group met at the home of SWOCTA members Tracy & Judy DeVault and we were on our way soon after 8.00 AM. The morning began overcast but the Arizona sun soon came into play. However, Prescott is cool compared to Phoenix. Tracy, our trip leader, started by showing us traces of the Hardy Toll Road.

THE HARDY TOLL ROAD - William Hardy contracted with the government to haul freight over 165 miles from Fort Mojave (near Bullhead City, AZ) to Fort Whipple (near Prescott, AZ). The contract began in July, 1866. The road was built mainly by Hualapai (Wall-a-pie) Indians. Hardy used ten mule teams and ten oxen teams for hauling freight.

Soon after the road was built the Hualapais and whites were fighting when a freighter killed the chief of the Hualapais. Hardy's Indian treaty and Hualapai road help was lost.

Hardy's first trip began on September 10, 1866 and on arrival at Walnut Creek he saw smoke signals indicating the size of his caravan. Fortunately, there was no attack. In fact, Hardy never lost any stock or freighters on his road.

Hardy established a toll gate at Walnut Creek. Typical FEES PER MILE were: wagon & 2 horses-1 ½ cents, livestock in droves- ½ cent.

We proceeded into the Williamson Valley.

THE WILLIAMSON VALLEY - Lt. Robert Williamson surveyed the area in 1854. The valley is long, grassy, has hills and springs which feed "the meadow". Pioneers on their way to Prescott saw the grass and water and settled the valley. The Army contained the Indians who used the valley as a hunting ground and were stealing and killing cattle.

The meadow was wet and swampy. A crossing in the lower end of the valley was the most frequently used. This crossing became the area in which the Simmons station was built.

In 1886, Bill Stewart started the Cross Triangle Ranch in the Valley. He became a prominent citizen and was elected a Supervisor of Yavapai County representing the Valley.

With the help of another Supervisor, Stewart had a cement wall and crossing built at Simmons. The cement wall can still be seen today. The importance of the wall was to stop the erosion at the crossing which would have eventually drained water from the valley if it was not held in check. However, Stewart was voted out in the next election because citizens thought the cement wall cost too much (\$2500).

SIMMONS - In 1880, Bill Simmons opened his station in Williamson Valley. People stopped at Simmons on their way to and from Prescott. Simmons operated

the station as a grocery store, had feed for the livestock of travelers and entertainment: a saloon and a dance hall.

Eventually, he operated the post office as well. Supplies and the mail for Simmons were brought from Prescott. We walked out to the site of Simmons but all that remains of this once thriving area are the outlines of foundations and bricks strewn over the ground. We went on to the Walnut Creek area and searched for the site of Camp Hualapai. We found it but it sure was a warm search.

CAMP HUALAPAI - the camp was established in 1869 for the protection of the freight and emigrant road between Fort Whipple and the Colorado river. It was abandoned in 1873.

Camp Hualapai was previously called Camp Toll Gate because it was close to Hardy's toll gate. It was renamed in August, 1870. There were estimated to be 200-400 soldiers stationed there. The soldiers did most of the building, and grew a lot of their own food as well as hay for the horses on the nearby, fertile and well watered lands. By 1873, the Army must have felt that the area was safe because troops were withdrawn and the post abandoned.

After abandonment, the main building at Camp Hualapai was used as a post office and recreation hall.

Martha Summerhayes in her book "Vanished Arizona" reached the vicinity of Camp Hualapai in September, 1874 ten days after leaving Fort Mohave.

There is not much left of Camp Hualapai except the debris of a once settled area. There are no standing buildings, walls or chimneys.

Before leaving Camp Hualapai some of our group looked for the Juniper Settlers Cemetery. In the cemetery the following headstones were seen: W.T.SHOOK OCT 5 1879 DEC 6 1881 ED SCHOLEY 1861-1881 / ROLAND SCHOLEY 1878-1881 and a third headstone :

MARILLA JANE RODGERS

DIED MARCH 6 1897

AGE 73

Within this grave an angel lies

No myth that flits above the skies

A host in life of family ties

Bespoke an angel, good and wise

Those that did not go to the cemetery were worn by the heat of the day and left for the journey home.

As usual we had a great time. Thanks to Tracy and Judy DeVault.

PLANNING MEETING JULY 18, 1998, PRESCOTT, AZ

Acting President Harland Tompkins called the meeting to order at 1:10 pm at the DeVault home, Prescott, AZ. Committee reports were then asked for.

Treasurer's Report - Harland Tompkins, copy attached. Audit occurred after the meeting.

Newsletter Report - Richard Greene, will produce Desert Tracks after significant events, averaging four per year.

Membership Report - A membership list and a list of those that haven't paid dues for this year was supplied by the Treasurer. Richard Greene will send a reminder to those who haven't renewed their membership. Discussed new ways to recruit members.

Vice President - No report.

Secretary's Report - Richard Greene, minutes will be published in "Desert Tracks" as a separate sheet and sent only to members. The previous minutes were accepted as presented in "Desert Tracks".

Marking - Richard Greene, disappointing relationship with BLM has resulted in no response or support from them in planning a marker at either Oatman or Painted Rocks sites. Their conflict or concern is that a marker will open the Oatman Massacre even more than presently used so would prefer a marker at Painted Rocks. However, nothing has progressed. May pursue another site for marking such as Hunter Draw or Fort Bowie. The Las Cruces BLM may be more accommodating. The Marking Charman will pursue BLM offices and talk to Park Service. Peter Bennett will try to get support from the Park Service.

TRIP PLANNING

Peter Bennett - Trip to Columbus, NM to investigate railroad history in area.

Fred and Joyce Rozum - Four wheel drive trip to La Paz, Arranburg Road.

Planning Meeting - Options presented were Ojo Caliente and Pagosa Springs. There was a discussion of planning possibilities.

MOTION: Richard Greene moved that SWOCTA planning be accomplished in conjunction with outings throughout the year. Tracy DeVault seconded. The motion carried 6 for and 2 against.

To help implement this new approach two things were proposed. An open letter to membership asking for ideas on what the membership wants in the way of outings and what should be done to provide these. Also, notification of at least 6 weeks is needed for outings. So if anyone has ideas please let it be known.

CHAPTER BROCHURE - Rose Ann Tompkins proposed revising the brochure. A color logo and picture may be included. Rose Ann asked that all suggestions be sent to her.

MAPPING - Summary attached. General consensus is that Rose Ann Tompkins is doing an outstanding job with mapping, trip preparation and the follow-up reports. General discussion of mapping procedures.

Meeting was adjourned at 3:40 pm by Acting President Harland Tompkins.

We had dinner that evening and afterwards at the DeVault's house we had a slide show of Tracy's trip to Skeleton Cave and the Spring mapping trip.

IF YOU HAVE FORGOTTEN TO PAY YOUR '98 CHAPTER DUES PLEASE
MAKE OUT YOUR \$10 (PER HOUSEHOLD) CHECK TO "HARLAND
TOMPKINS" AND MAIL TO:

HARLAND TOMPKINS
SWOCTA
1125 W. MISSION DRIVE
CHANDLER, AZ 85224

THANKS, RICHARD GREENE, MEMBERSHIP CHAIR

Richard Greene
Editor, Desert Tracks
PO Box 483
Angel Fire, NM 87710



****PLEASE PAY 1998 DUES.**

Harland & Rose Ann
Tompkins
1125 W. Mission Drive
Chandler, AZ 85224-2354

85224/2354

