

# DESERT TRACKS



VOL. 6  
NO. 4

SOUTHWEST CHAPTER  
OREGON-CALIFORNIA TRAILS ORGANIZATION

AUGUST  
1993

Editor - Rose Ann Tompkins, 1125 W. Mission Dr., Chandler, AZ 85224 (602) 963-3565

## FROM THE PRESIDENT

Doyle Reed

I thought we might have a major problem on our hands but I underestimated the dedication of our members. Rose Ann had asked to be relieved of the job as editor of *Desert Tracks* effective at the end of 1993. I think you can realize how such an action could send chills down a person's back. Finding a replacement was the first order of business at the July 17 planning session. It only took about two minutes for the Roots to volunteer for the job. How lucky can we be! Details regarding the change will be worked out between Rose Ann and Ruth and Jack. Our sincere thanks go to the Roots for taking on this most important responsibility. Also a round of applause for the wonderful job that Rose Ann has performed. *Desert Tracks* is the glue that keeps the chapter functioning.

Our thanks to Sheri and Bob for hosting the Planning Meeting. They provided deluxe accommodations, gourmet food, beautiful weather and outstanding hospitality. Due to highway construction on Mt. Lemmom, you did have to be somewhat of an explorer to find their cabin, especially if you got there before they got their signs out. But that added to the adventure.

The enthusiastic group rapidly developed a complete and interesting program for the coming year. I will not detail it here but leave that to the minutes.

The nominating committee of Jack Root and Harland Tompkins is actively seeking candidates for chapter officers for the coming year. Please be prepared to say **Yes** when they contact you.

Thanks to all of you for your wonderful support during the past year. Who could ask for a better crew to work with?

**The Mapping Workshop has been rescheduled for October 30 & 31. It will be all day on Saturday and half of Sunday. We are working on finding a moderately priced motel in Flagstaff. As soon as plans are completed, you will receive details, but set aside those dates if you plan to attend.**

At the Baker City Convention, there was time scheduled for chapter meetings. SWOCTA gathered for what was mostly a social visit, having so recently had the planning meeting. Pictured here, left to right are: Ruth Root, Bea Kabler, Bob Lee, the Richard Hahns, and Linda Hatch. The Hahns are from Texas and we were the closest chapter to them and they joined our group. Not pictured but present were Jim and Marion Carter, Betty Lee, Susan Badger Doyle, and Rose Ann Tompkins.



# MINUTES OF SWOCTA PLANNING MEETING

## JULY 17, 1993

The meeting was called to order at 1:45 PM by president Doyle Reed at the Mt. Lemmon, AZ cabin of Bob and Sheri Lee. Members present included Doyle and Fiona Reed, Betty and Bob Lee, Ruth and Jack Root, Harlie and Rose Ann Tompkins, Wilma and Aubrey Haines and Bob and Sheri Lee.

The treasurer reported a balance of \$514.76.

Our "Desert Tracks" editor, Rose Ann Tompkins, had tendered a letter of resignation from that position effective the end of the year. Ruth and Jack Root agreed to take the job of editor for an unspecified length of time starting January 1994.

The subject then switched to planning five events for the upcoming year.

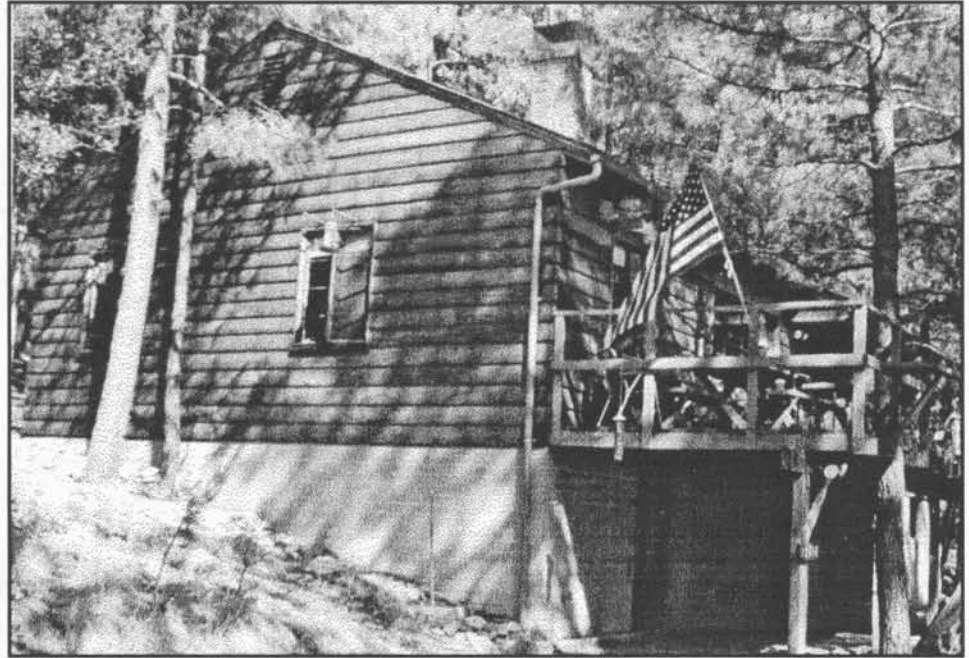
1. Date: Oct 30-31, 1993  
Hqtrs: Flagstaff, AZ  
Site: NAU campus and Beale Road  
Hosts: Rose Ann and Harlie Tompkins, Jim Byrkit  
Subject: Mapping WORKSHOP (this will cost more)
2. Date: Late Jan, 1994  
Hqtrs: Gila Bend, AZ  
Site: east of Gila Bend  
Hosts: Doyle and Fiona Reed  
Subject: Butterfield Pass on Butterfield Trail
3. Date: Mar 19, 1994  
Hqtrs: Las Cruces, NM  
Site: Good Samaritan Village auditorium  
Hosts: Jim and Marion Carter  
Subject: Symposium
4. Date: mid-Apr, 1994  
Hqtrs: Safford, AZ  
Site: Gila River east of Safford  
Hosts: Betty and Bob Lee  
Subject: Kearney's route from York to Bonita Creek
5. Date: July 16, 1994  
Location: possibly Mt. Graham, (Safford) AZ  
Hosts: Betty and Bob Lee  
Backup location: Strawberry, AZ  
Subject: Planning meeting

The nominating committee will meet immediately following this meeting. Meeting adjourned at 3:40 PM.

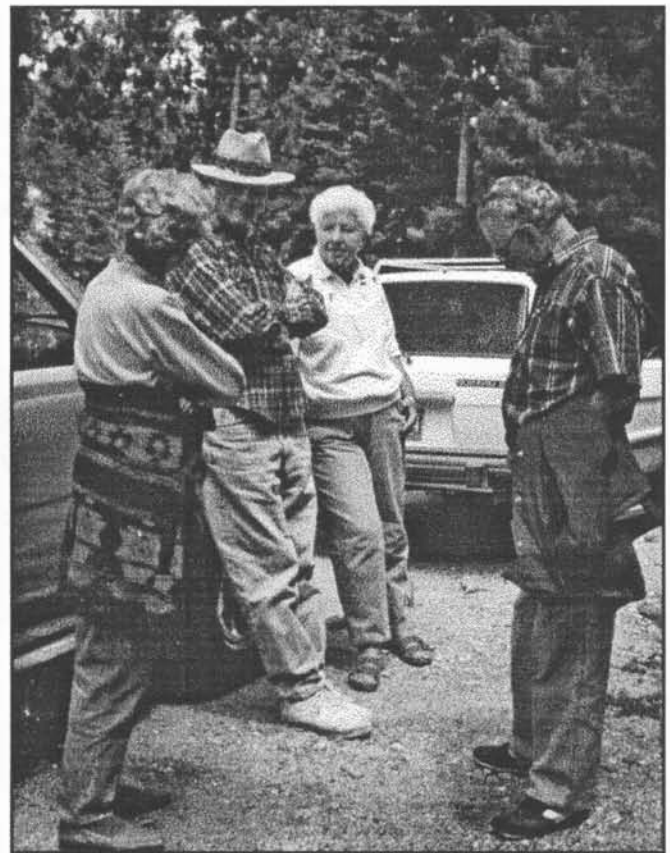
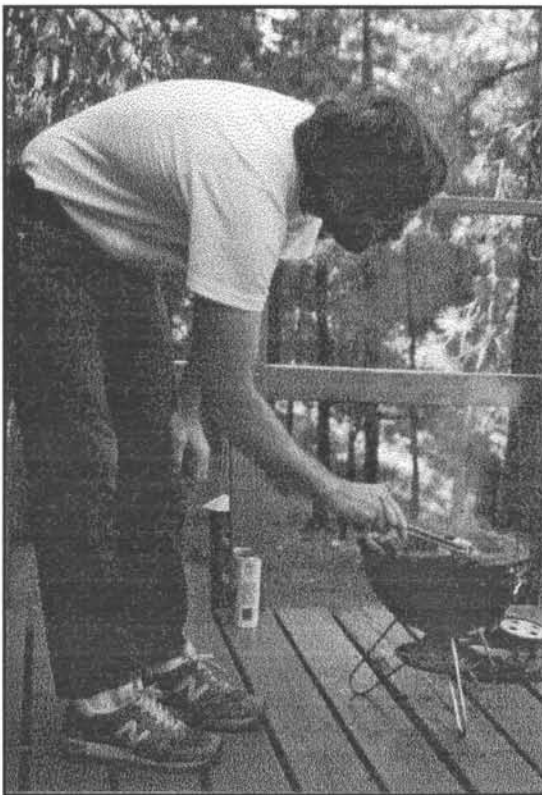
Secretary, Sheri Lee

## PLANNING MEETING IMAGES

The Lee cabin on Mt. Lemmon sits among the pines at 8,000 feet. Cool nights and warm days are the norm. This was the site of this year's planning meeting, and the third time the Lees have made this site available for our planning meeting. After a sack lunch on Saturday noon, we settled down to business for the afternoon. An evening presentation on the use of the Global Positional System for mapping trails, was given by Harland Tompkins.



Bob Lee, our host, cooked the morning sausages on the grill; an aroma guaranteed to wake any late sleepers on Sunday morning. Sheri and Bob provided two home-cooked meals for us, adding to the delight of the weekend.



Betty and Bob Lee (in the foreground) and Jack and Ruth Root have time for some visiting during the Sunday morning trek to the summit of Mt. Lemmon. The views were grand and a special treat of the morning was seeing large masses of ladybugs on the trees and bushes.

## SWOCTA MEMBERS AT OCTA'S BAKER CITY CONVENTION



OCTA's board meeting occurs the day before the formal opening of the conventions. Here, board member, Susan Badger Doyle of Albuquerque, NM, shares a "power" lunch with OCTA's President, Ross Marshall at the local sub sandwich shop in Baker City.



Bob and Betty Lee of Safford, AZ enjoyed the Bar-B-Q dinner at the city park in Baker City on Thursday evening. The Bar-B-Q followed an afternoon of touring the new Oregon Trail interpretative center at Flagstaff Hill, located a few miles east of Baker City.



The convention opened on Wednesday morning with the general membership meeting. This meeting and the later presentations were held at the high school auditorium, the only indoor facility in Baker City that could hold all the attendees. Here, Jim and Marion Carter of Las Cruces, NM (on left) and Ruth and Jack Root of Tucson, AZ wait for the meeting to begin. The Carters were attending their first OCTA national convention.



# *The SouthWest Chapter of OCTA*

Oregon-California Trails Association



## Trails Symposium, 94

To be held in Las Cruces, NM  
on March 19, 1994

# *Call for Papers*

Please send Titles by Dec. 1, 1993 to

Harland Tompkins  
1125 W. Mission Dr.  
Chandler AZ 85224  
(602) 963-3565

This is a Forum to present the results of your reading, study, or research in areas of emigrant trails, southwest history, etc.

Although a talk does not require a manuscript, if the material lends itself, we encourage you to submit the manuscript at the time of the meeting for inclusion in the "Proceedings"



Hosted by the

**DONA ANA COUNTY  
HISTORICAL SOCIETY**

*In our future, this chapter will hopefully be interested in the possibility of pushing for more and better interpretation along the Southwest trails. The following is part of a report by the Legislative Committee Chairs of OCTA, Jeanne and Bill Watson.*

## **NATIONAL PARK SERVICE WORKSHOP INTERPRETATIVE PLANNING FOR LONG DISTANCE TRAILS**

Harper's Ferry - May 2-7, 1993

The workshop was attended by 30 participants with 10 from the NPS, another 10 from agencies such as the BLM and US Forest Service and the rest representing long distance trails throughout the US, including the Santa Fe, Mormon-Pioneer and Oregon-California Trails.

The week included 8 a.m. to 5 p.m. sessions with additional activities each evening. Topics presented by leaders in the field were: "What Is Interpretation?", "Visitors - Who Are They, What Do They Want?", publications, audiovisuals, outdoor exhibits, living history presentations and "Putting History into the Present."

Other topics were: "What's There and What's Not - Interpreting Historic Structures," museum exhibits, "Making Interpretation Accessible," "Culture, Challenge and the History Police," and "Approaches to Interpretive Planning." The emphasis was upon setting themes, goals and objectives for each type of interpretation.

The group toured the NPS training facilities and had an opportunity to talk with specialists. Practical interpretive skills included participating in field exercises with teams of 4-5 assigned to specific sites. This required preparing a written plan, critiqued by NPS workshop leaders thus helping to clarify themes so everyone knows what the purpose of an interpretation is supposed to be, even for writing the text of a label or sign.

Goals included achieving an awareness of what constitutes good interpretation and how to achieve quality programs using various media and services. We also learned about the complexity and scope of the field and methods of planning, developing and evaluating.

And we now better understand the NPS position about trail markers/signs (which are changed on an average of every 20 years!).

### **DESERT TRACKS**

Rose Ann Tompkins  
1125 W. Mission Dr.  
Chandler, AZ 85224

**FIRST CLASS MAIL**

