

# DESERT TRACKS



VOL. 6  
NO. 2

SOUTHWEST CHAPTER  
OREGON-CALIFORNIA TRAILS ORGANIZATION

MARCH  
1993

Editor - Rose Ann Tompkins, 1125 W. Mission Dr., Chandler, AZ 85224 (602) 963-3565

## FROM THE PRESIDENT -

### Doyle Reed

At the meeting in Bluff, I promised to get the lists of Topo Maps for Arizona and New Mexico and forward them to Jim Byrkit. As soon as we got home, I sent a request to Denver for copies of the lists plus an order for maps. I got the maps but no list so after a reasonable wait, I repeated the order for the lists and lo and behold, they came. They were a little more complicated than the old ones I had for California but after due effort, I was able to decipher their system and order some more maps. I have often wondered why they hadn't devised some system of numbering the maps instead of this no-system naming procedure. But I guess we will live through it all. Anyway, if you need information on maps, Jim has the lists.

Fiona and I had planned on coming to Arizona the second week of January to tie down the Butterfield Stage route from Tucson to Yuma with the idea that we would offer it as a chapter outing. We got the trailer all loaded and were to leave Wednesday morning. When we got up that morning it was raining like we seldom see here. We decided we didn't want to travel in the rain so we postponed departure for a day. The next morning it was still raining. It was also raining in Southern California and in Arizona and the forecast was for continued rain so we postponed everything until later in the spring. No date yet but we will do it.

Our planning session in July will be here before we know it, so get your plans in place to offer some interesting events for next year.

I have never been sure of the procedure for electing officers for the chapter or how long the



## LAST CHANCE !!!

**IF YOU HAVE NOT SENT YOUR  
1993 MEMBERSHIP  
RENEWAL DUES  
TO SHERI LEE, PLEASE DO SO  
SOON. THIS IS THE**

## LAST NEWSLETTER

**YOU WILL RECEIVE  
IF YOU DO NOT RENEW.**

**A RENEWAL FORM IS  
AVAILABLE AT THE  
BACK OF THE NEWSLETTER.  
DUES REMAIN \$10 PER YEAR.**

term of office is. Based on the fact that the first two presidents served for two years, I thought it prudent to start thinking about the next generation. My experience has been that usually good officer material is on the nominating committee. Therefore, I am taking the liberty of appointing the past presidents to the nominating committee. They can draw straws to see who is chairman. We will see what they come up with.

See you in Cook Canyon. If it doesn't rain.

**THE FOLLOWING JOURNAL ENTRIES ARE FROM THE ROAD-BUILDING EXPEDITION OF 1859 ON THE BEALE ROAD, EAST AND WEST OF FLAGSTAFF, ARIZONA. THIS IS THE GENERAL AREA THAT SWOCTA WILL USE FOR THE MAPPING WORKSHOP IN MAY, 1992**

**JOURNAL OF EDWARD BEALE**

**April 11** - The day windy and disagreeable; worked off the steep pitch at the mouth of Canyon Diablo and travelled fifteen miles to Walnut creek, in which we found abundance of water in holes and large pools. Shortly after our arrival at camp the water came down in a full stream, filling the whole bed of the creek, and making a stream some thirty or forty yards in width and two or three feet in depth; we have abundance of drift wood and a fringe of small timber growing on the creek, walnut and hackberry. This morning I went off the trail some miles and struck the Canon Diablo; it is appropriately named, being a chasm in the earth, with perpendicular rock sides, in places a hundred and fifty feet in depth; . . . but for this canon the road could be shortened to the Colorado Chiquito twenty-five miles; it might be easily bridged.

**April 12** - We are now at the foot of the San Francisco mountain, and a light snow is falling, which melts almost as rapidly as it falls. Travelled seven miles and encamped in some cedars by the road side. We are glad once more to see the green grass.

**April 13** - Leaving last night's camp we travelled to Cosnino Caves and stopped to noon, at this place we found, as at Walnut creek, a booming stream of water filling the whole bed of the creek; after noon came on about seven miles further, and encamped at a steep pull out of a hollow, with the view of working it in the morning; Little Axe killed an antelope.

**JOURNAL OF WM. P. FLOYD**

**Monday, 11 April, 1859** - We left camp early and here leave the Little Colorado River. . . . At this point we commence ascending towards the San Francisco Mountains. We are now halted on the plain to shelter from the wind, which though not cold is exceeding disagreeable and blowing harder than I ever felt it. The wind moderating a little and it being a forerunner of bad weather, we left our stopping place and came onto Walnut Creek, making from the Little Colorado to camp 15 miles. After getting some distance up the slope from the river towards the San Francisco Mountains, you again meet with lava, the first from Zuni west. Here it is in great abundance, covering the plain either in masses or in the shape of small stones, on some parts of the plain it appears to have rained down like hail. The grass is fine wherever it can get root.

**Tuesday, 12 April, 1859.** - We are here on Walnut Creek in camp. It is snowing whether we leave or not depends on its clearing up or not. It did not clear up, but we moved 7 miles and camped for the night, wood and grass but no water.

**Wednesday, 13 April, 1859** - We left camp this morning early and came to the Canino Caves where we ate our breakfast and then travelled on towards Leroux Springs. We are now in camp near the foot of a spur of the San Francisco Mountain on the eastern side. The country with plenty of savin, Pinon and yellow Pine timber is very lovely in its appearance with fair soil, no water.

**JOURNAL OF JOHN UDELL**

**April 11** - No frost; wind blowing a gale all day, so that it was with difficulty we could face it; we came fifteen miles to Walnut Creek, or Canon, and camped; there was no water here last fall, but there is a large stream now.

**April 12** - Frost again and snowing, so that we could not start until 3 o'clock P.M.; came seven miles and camped; the women suffer some with the cold.

**April 13** - Last night ice was frozen to the thickness of two inches; old snow banks in places three feet deep - in others, within a short distance, it is dry and dusty; pleasant day; passed Cosaneno Cave and Creek; this creek was dry last year, but now there is a large stream; traveled fifteen miles and camped.

*[Walnut Creek campground is located at what is now called San Francisco Wash. It is on the Grand Wash Quad, T22N, R11E, Sec. 29. This is on the Indian Reservation and permission is needed to visit the area.]*

*Cosnino Caves is located in the area now called Turkey Tanks. It is on the Sunset Crater East Quad, T22N, R9E, Sec. 35 & 36. Most of the caves have been buried under highway fill, but several are still visible.]*

**April 14** - Worked hard all day until evening at the road, removing large rocks and grading it; in the evening we drove on some six miles, ascending a rocky mesa, which I also worked, changing the location of the road at this point to an ascent offering a better grade; we found the water-holes in the valley which we dug last year full, affording us an abundant supply for our camp and animals; the Delaware killed an antelope.

**April 15** - Worked the road in places, and travelling seven miles arrived at Le Roux spring, the weather delightful; no one could pass through this country without being struck with its picturesque and beautiful scenery, its rich soil, and its noble forests of timber; the view from our camp of this morning is unsurpassed in the world; the soil is a rich black loam, the grass, gramma and bunch equally mixed, and the timber, pine of the finest quality and greatest size; water at this season we find everywhere, nor is there at any time any lack of it at this place.

**April 16** - Leaving Le Roux spring we travelled four miles, and encamped in the forest, where the green grass afforded abundant pasturage; the road in places heavy with mud.

**April 17** - Passing out of the forest in a mile and a half we came to a beautiful prairie some five miles in breadth and three times that in length; at the western extremity of this prairie, and within a few hundred yards of the road to the right is a spring; as it is not large, I determined to improve it, and therefore camped for the day and put all the hands to work to dig it out; it will then supply abundant water for parties of any number; . . . numbers of deer and antelope bounding over its green turf make it peculiarly attractive, while the magnificent San Francisco mountain, capped with eternal snow, renders the landscape perfect; the Delaware killed an antelope.

-----  
*Edward Beale was the leader of the expedition; he had a federal contract to build the wagon road.*

**Thursday, 14 April, 1859** - We left camp this morning and after traveling 7 miles have stopped for the night. The valley is a beautiful one at the San Francisco Spring. There appears to be plenty of water in this valley at present. I do not think it very permanent. . . . I doubt if it is anything but grazing and root region. It is too dry and too cold for crops of grain other than prairie crops which will mature in three months at furthest and which do not require much moisture.

**Friday, 15 April, 1859** - We left San Francisco Spring this morning and after passing over the worst road we have had in New Mexico, we are now in camp at Leroux Spring. It is a pretty spring gushing from beneath a cliff and running off in a clear small stream for a few hundred yards and is then absorbed by the earth. We have here a large and fertile valley with two other springs besides Leroux Spring. One rising in the prairie some mile and a half or two miles from Leroux Spring, the other east of it some half a mile and rising in the mountain. We have traveled 6 1/2 miles today.

**Saturday, 16 April, 1859** - We left Leroux Spring this evening at 4 o'clock, we have been busy all the morning in unloading the wagons and leaving some . . . . The distance we made was 4 miles.

**Sunday, 17 April, 1859** - We left camp this morning and after a laborous haul have come to camp eight miles from last night's station. Here we have wood, grass and water, the last of which we were without last night. The more I learn about it, the better satisfied I am that it is the best part of the Territory [for] stock and a good region anywhere.

-----  
*William Floyd was the surgeon with the expedition.*

*[Leroux Spring is located on the Hunphrey's Peak Quad, T22N, R6 E, Sec. 14. The spring has been capped for many years.]*

**April 14** - Frost again; we worked on the road in the forenoon, and in the afternoon came seven miles to San Francisco Springs; we camped at this place.

**April 15** - Frost again at night; day pleasant; fresh antelope meat to-day. We traveled seven miles and camped at the La Reaux Springs; mail station here.

**April 16** - Ice frozen again this morning; pleasant day. Here Mr. Beale left three of his wagons and about thirty of his poor mules, and two of his men in charge of them. We came six miles and camped.

**April 17** - Light frost last night, pleasant day; we came seven or eight miles and camped near plenty of wood and water; no water here last year.

-----  
*John Udell was an emigrant traveling with the expedition.*

<p><b>SOURCES:</b></p> <p>Edward F. Beale, "Wagon Road - Fort Smith to Colorado River", House Executive Document No. 42, 36th Congress, 1st Session, (Serial 1048)</p> <p>William P. Floyd, "Journal", original in Huntington Library</p> <p>John Udell, "Journal of John Udell", Ashtabula Press, 1868</p>
---

# SOUTHERN TRAIL OUTING

## MARCH 20 & 21, 1993

Planning is in the final stages for the Southern Trail Outing on March 20 and 21.

Saturday the group will take the trail through Cooke's Pass. This pass was used by the Mormon Battalion in 1846, hundreds of '49ers on their way to the gold fields of California, the Butterfield Stage, and various other military, mining, emigrant, and freighting groups before the coming of the railroads to the Southwest.

Although we visited the Cooke's Springs and Fort Cummings area on a previous outing, we have not had a trip through the pass before. We will also follow other parts of this trail on Saturday, depending on road conditions and the availability of a local guide.

On Sunday the group will travel the part of the trail from the Separ area southwest through the Coyote Hills to Playas Lake. Last year we came towards Playas Lake from the west as far as Whitmire Pass. This time we will travel from the opposite direction, ending with a good view of the lake bed as the travelers saw it more than a century ago.

The meeting place for the weekend will be in Deming, New Mexico. Contact person is Pat Etter. Please return the registration form on the next page to her.

Four-wheel drive vehicles will be needed for both days of this trip. If you do not have such a vehicle, indicate that on the form and every attempt will be made to place you in another vehicle. A CB radio is not an absolute requirement, but you will find it most helpful in following in the group, both from an information standpoint as well as allowing the group to travel more efficiently.

We will meet each morning **promptly** at 8 am. Bring your lunch, water and snacks. Sturdy shoes, hats, cameras, and sun block are suggested. Photo copy maps of specific areas will be provided as part of your \$2 trail fee.

### SCHEDULE

#### Saturday, March 20

8:00 AM -- Meet in the parking lot of the Grand Motor Inn in Deming, NM, breakfast eaten, gas tanks full. We will be out the entire day.

Dinner will be in Deming at a time determined by our return from the trail. A chapter business meeting will follow dinner.

#### Sunday, March 21

8:00 AM -- Meet as on Saturday.

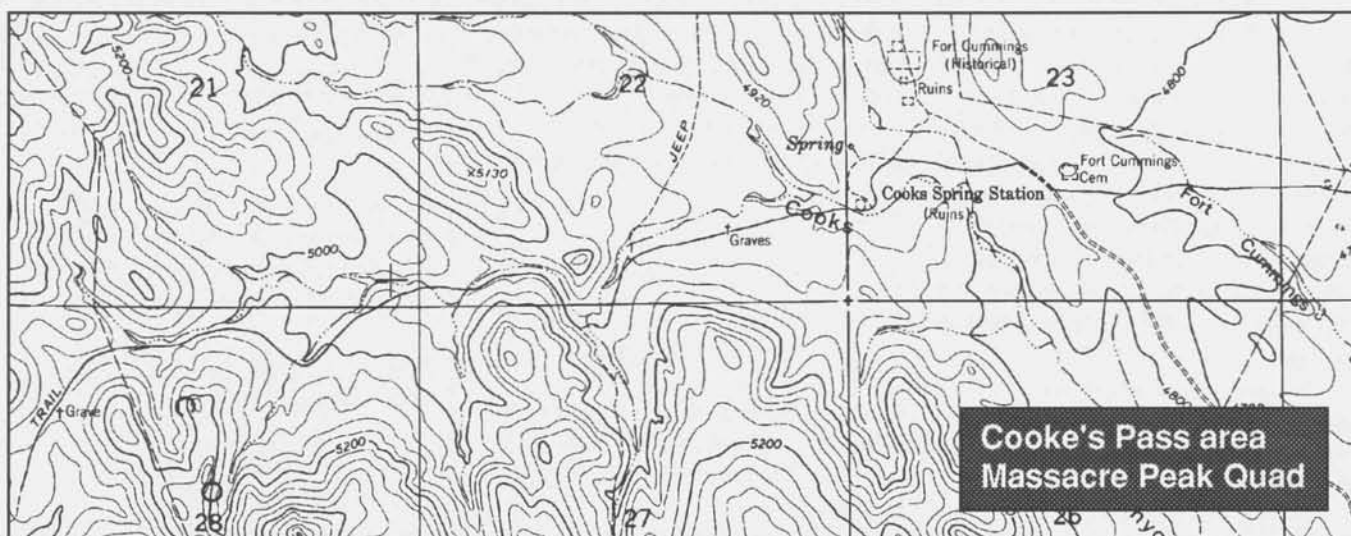
The outing will conclude around mid-day to allow you to return home in the afternoon.

There are several motels in Deming. The two below are suggested as they are near each other and will be our meeting area.

Grand Motor Inn - (505) 546-2632  
AAA and Senior Discount  
Restaurant

Best Western Chilton Inn - (505) 546-8813  
AAA and Senior Discount  
Restaurant

You will be asked to sign a waiver at the beginning of the trip.



**REGISTRATION FOR SOUTHERN TRAIL OUTING  
MARCH 20 & 21, 1993**

NAME(S) ATTENDING: \_\_\_\_\_

MY PHONE NUMBER: \_\_\_\_\_

\_\_\_\_ I will be driving a 4WD vehicle      \_\_\_\_ I will have a CB radio

I can accomodate \_\_\_\_\_ extra riders in my 4WD

I/We need a ride for \_\_\_\_\_ people in a 4WD vehicle

Return to: Patricia Etter  
1051 S. Dobson Rd. #218  
Mesa, AZ 85202

Pat's phone number is (602) 964-3967

**by March 18**

---

## **SOUTHWEST OCTA MEMBERSHIP FORM**

Chapter dues are \$10 per mailing address and are due each December for the next year.  
This is the only notice you will receive, to save postage costs there is no special mailing.  
You need to be a member of the national organization in order to belong to a chapter.

**Make your check out to Sheri Lee, NOT SW OCTA.**

NAME(S) \_\_\_\_\_

ADDRESS \_\_\_\_\_

PHONE NUMBER \_\_\_\_\_

Send this form and your check to:

Sheri Lee  
5790 E. Territory Ave.  
Tucson, AZ 85715

## **MAPPING WEEKEND ON THE BEALE ROAD SCHEDULED FOR MAY**

The last activity for this current year will be the mapping workshop on **May 15 & 16**. Chapter member Don Buck will show participants how to use the mapping guidelines that OCTA has developed for mapping the trails on USGS topographic maps.

We will also have use of a Global Positioning System (GPS) unit. This electronic unit uses satellites to accurately determine location and can be a very useful tool in mapping operations.

Details for this activity are still being made. You will receive more information later. However, if you are interested, save these dates on your calendar. Flagstaff, AZ will be the starting place for this hands-on workshop.

Chapter contact people are Harland and Rose Ann Tompkins.

## **ANNUAL PLANNING WEEKEND IS OUR JULY ACTIVITY**

We will hold our annual planning weekend on **July 17 & 18**. Sheri and Bob Lee have invited us to their cabin on Mt. Lemmon, outside Tucson. Here we will enjoy the cool pines at 8,000 ft. while the birds and other wildlife entertain us.

Our programs for the next year are put together at this meeting. Our chapter is only as vital as the members make it, therefore this planning session is a most important event. Plan to come with proposals and/or suggestions. We need some new faces, new ideas and new activities. If you cannot attend, send your information so attendees can consider them.

The Lees will have details on the weekend and how to find their place in a later newsletter.

### **DESERT TRACKS**

Rose Ann Tompkins  
1125 W. Mission Dr.  
Chandler, AZ 85224

**FIRST CLASS MAIL**

